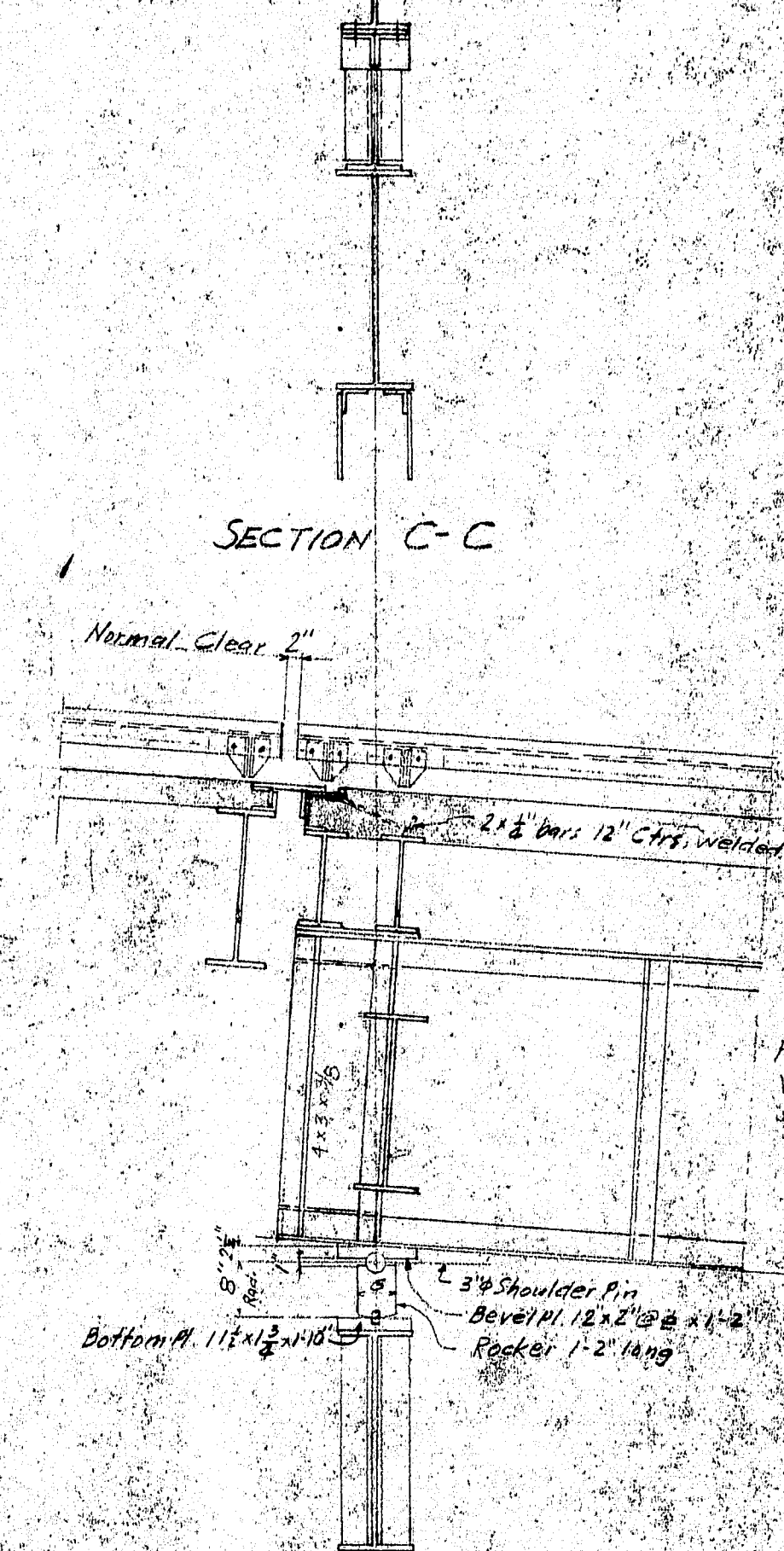
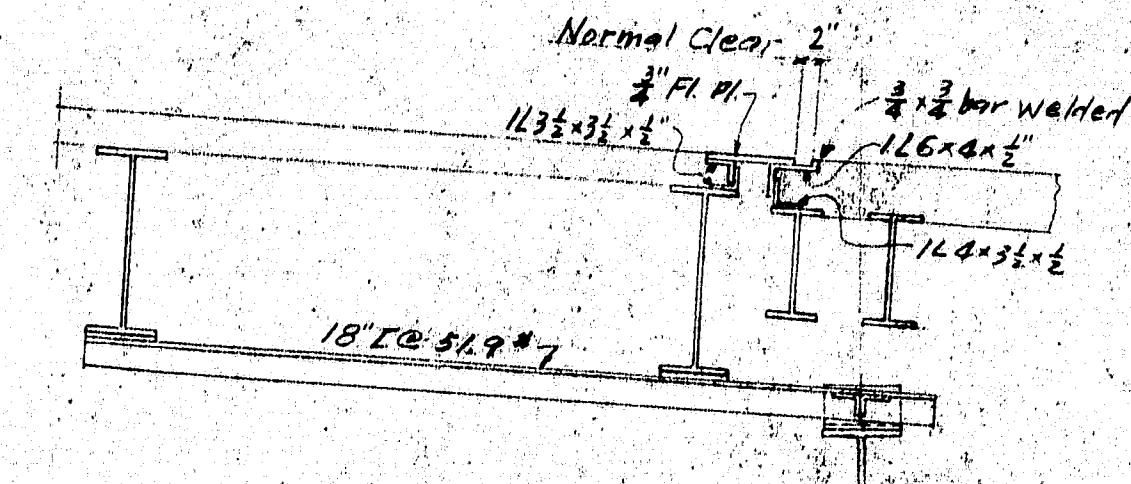
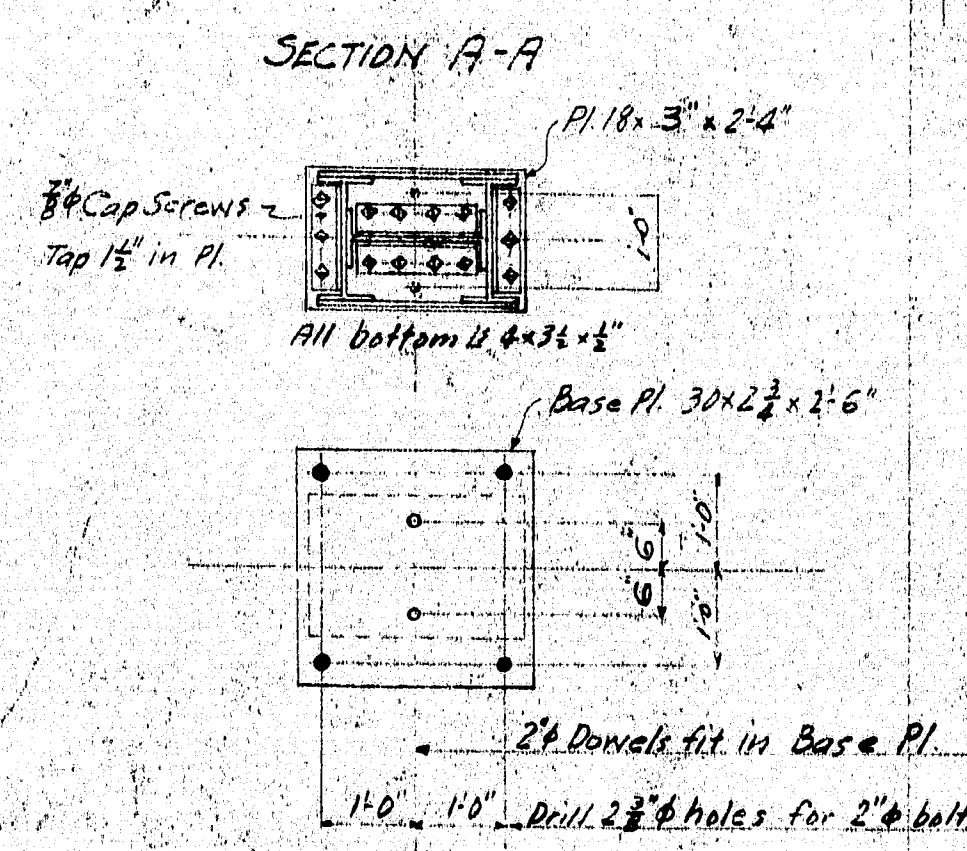
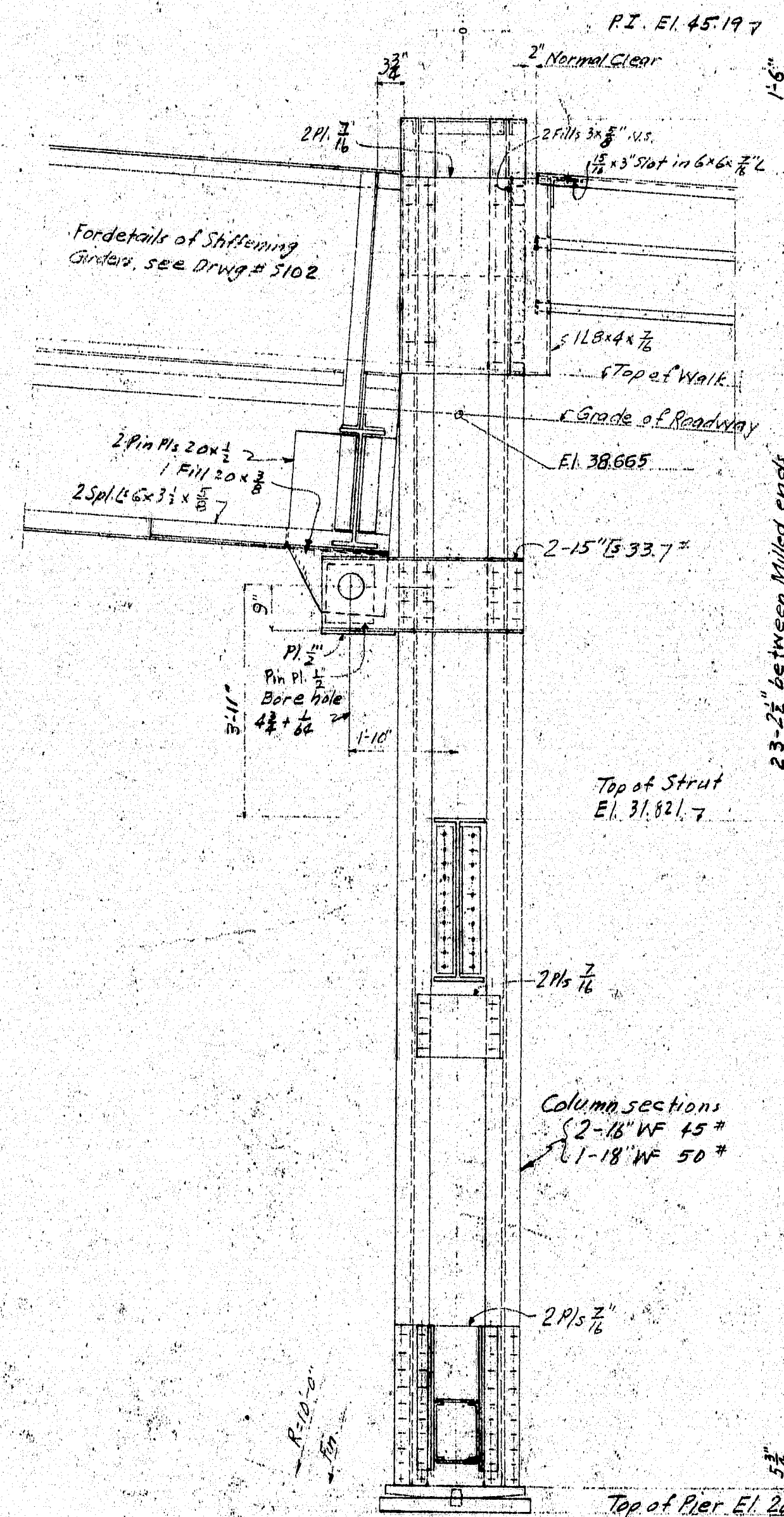
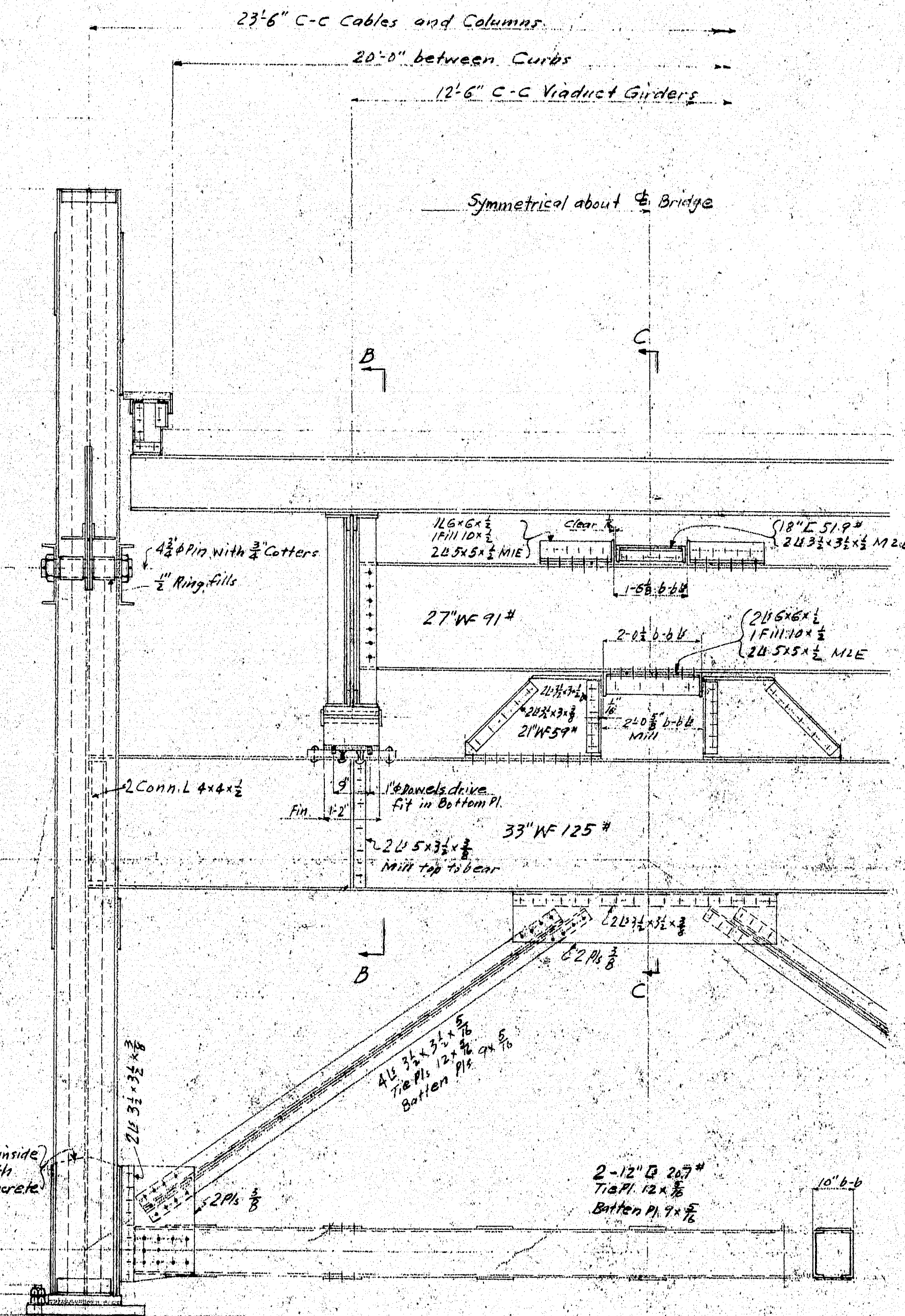


TOP VIEW



SECTION B-B



ELEVATION OF CABLE BENT

Note: Anchor bolts to be furnished by superstructure Contractor and set by substructure contractor.

Estimated Weight	One cable bent	20 100
	For Bridge	40 200
	Anchor Bolts one bent	5 10
	" " for bridge	10 20

REVISION DATE 1-7-38 REMARK Redrawn 7-26-39 Revised as built	P.W.A. PROJECT NO ME1010D DEER ISLE SEDGWICK BRIDGE DISTRICT BRIDGE OVER EGGMOGGIN REACH FROM LITTLE DEER ISLE TO SEDGWICK HANCOCK COUNTY, MAINE CABLE BENTS
	ROBINSON AND STEINMAN ENGINEERS NEW YORK CITY

124-18